

THE NATIONAL WILD TURKEY FEDERATION'S PALMETTO SHOOTING COMPLEX PAVILION AND EDUCATIONAL CENTER

Woodworks Wood Design Submittal

The National Wild Turkey Federation's (NWTF) mission is "Save the Habitat, Save the Hunt." To meet this objective, the organization is working to preserve millions of acres of wilderness across the country, open more areas to hunters, and promote responsible hunting practices to the next generation of hunters. The NWTF's Palmetto Shooting Complex's Pavilion and Educational Center—the hub and heart of the "Save the Habitat, Save the Hunt" initiative—is a new, educational facility in Edgefield, SC. This 9,275 square foot timber structure sits among a 700-acre wildlife preserve and serves as a place of destination for hunting and conservation enthusiasts, researchers, and educators. Along with housing educational elements, the building itself is a teaching tool that illustrates sustainable design practices including passive cooling, natural daylighting, and the use of locally sourced materials.

The pavilion is constructed primarily from native southern yellow pine and offers a place of retreat from the hot South Carolina sun. The heavy timber frames are supported by 8-foot-tall masonry buttresses and span 60 feet to cover an open area more than 100 feet long. The roof deck and gracious overhangs hover high above the floor to provide a large shaded canopy while allowing ample air movement throughout. The interior is shielded from the heat of the sun by structurally insulated panels (SIPs) that provide high thermal resistance while efficiently spanning between the timber purlins.

An open north-facing clerestory enables passive ventilation while allowing natural light to flood the center of the space. The white exterior of the classroom wing reflects the daylight and balances the lighting level throughout the pavilion.

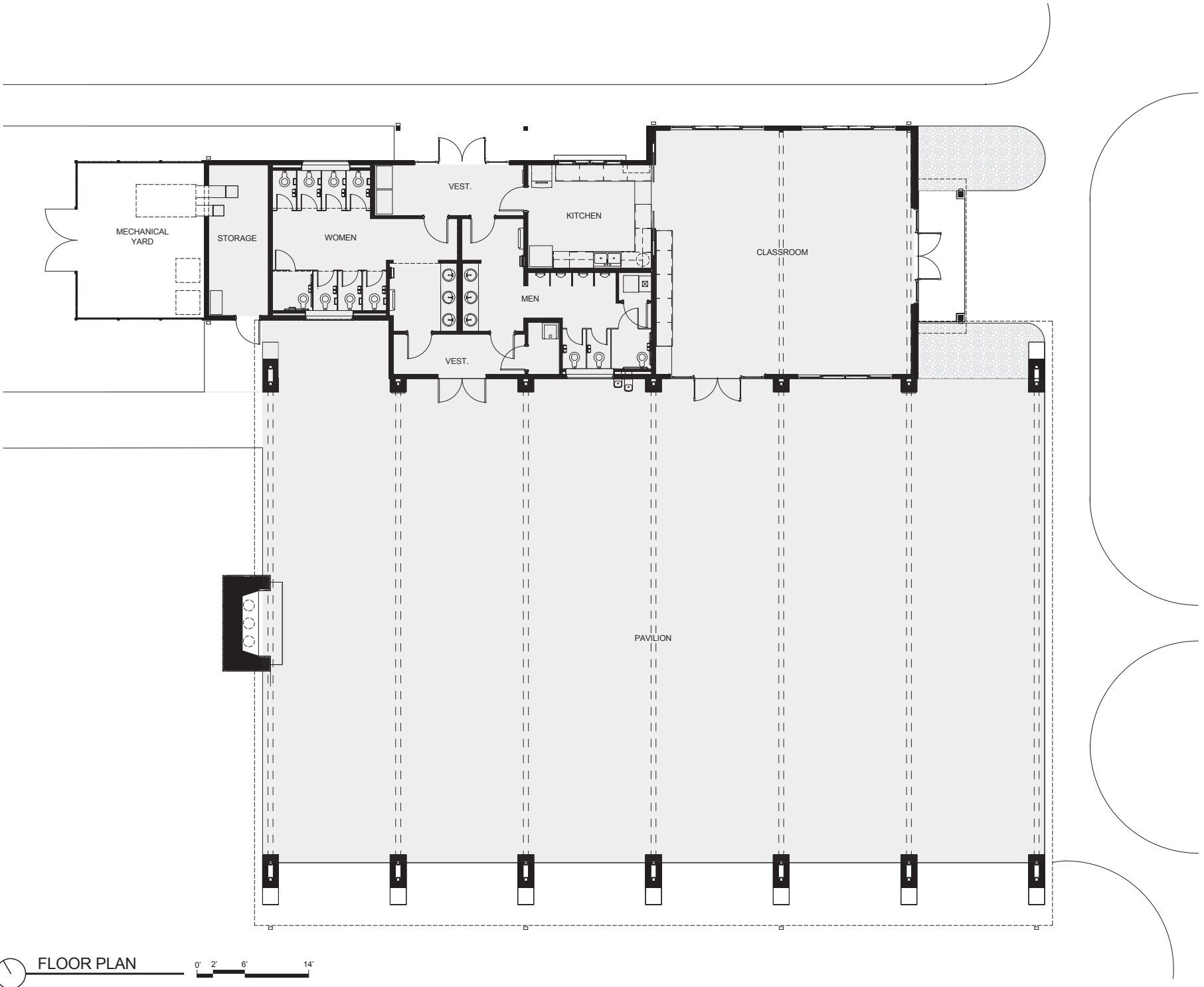
Wood in Educational Buildings

Inspired by the ornate design of a turkey's fan tail, the heavy timber trusses are truly the focal point of this facility. The radiated timber uprights and scalped bottom chords form a segmented arch while the contrasting steel connector plates and diagonal struts complement the timber's form. An environmentally safe product, natural linseed oil, was used to preserve the wood's beautiful tone. This same finish was applied to the southern yellow pine tongue-and-groove paneling on the underside of the vaulted ceiling.


The structure's design and style is a nod to the quintessential hunting lodge. The use of wood further promotes this feeling, leading to a final facility that is at harmony with its native surroundings while projecting a warm, inviting glow only possible with wood structures.

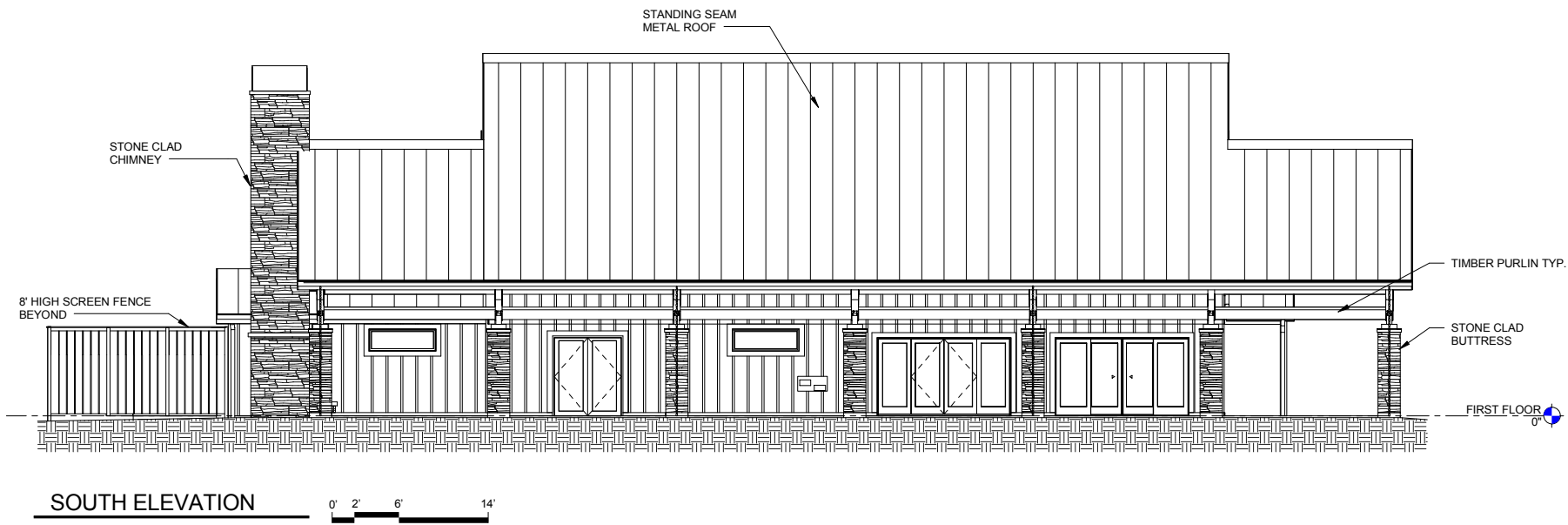


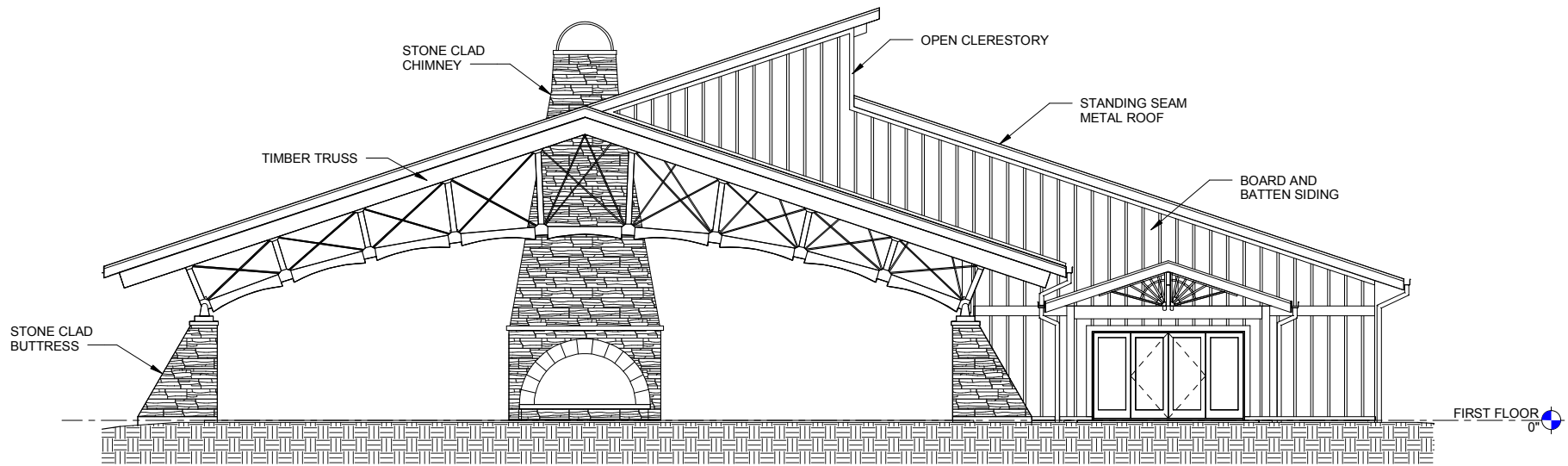
Photos courtesy of Matt Lindler/National Wild Turkey Federation



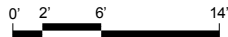
FLOOR PLAN

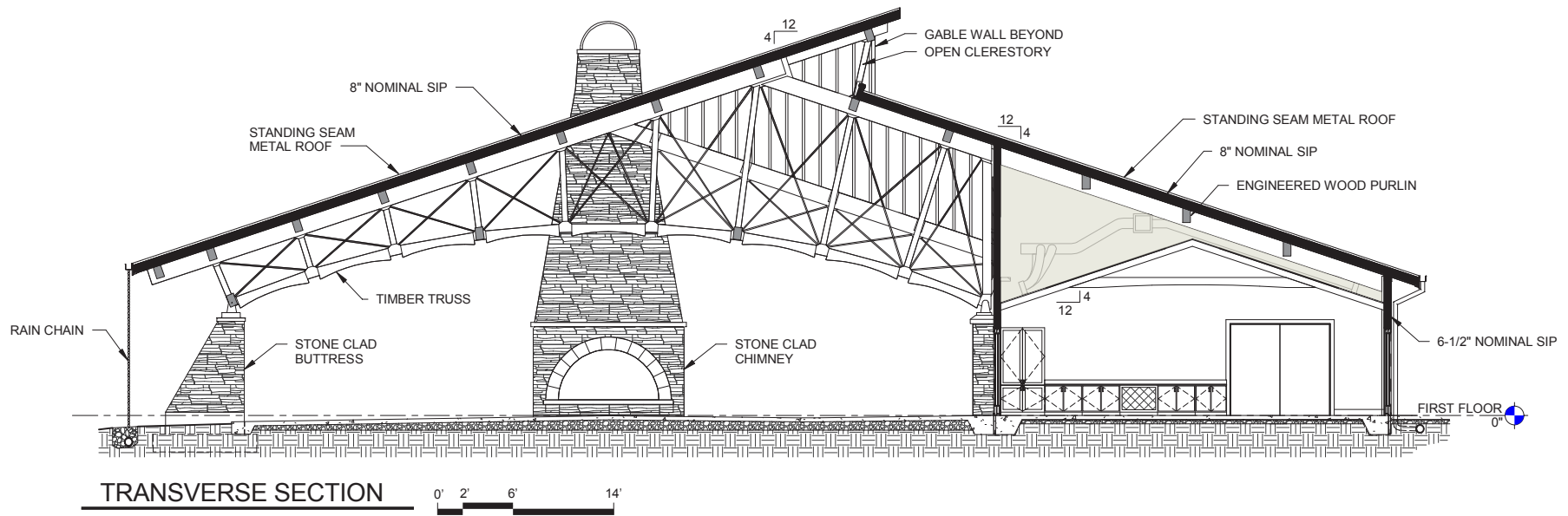






EAST ELEVATION







NWTF Palmetto Shooting Complex Pavilion and Education Center



NWTF Palmetto Shooting Complex Pavilion and Education Center



NWTF Palmetto Shooting Complex Pavilion and Education Center



NWTF Palmetto Shooting Complex Pavilion and Education Center



NWTF Palmetto Shooting Complex Pavilion and Education Center



NWTF Palmetto Shooting Complex Pavilion and Education Center



NWTF Palmetto Shooting Complex Pavilion and Education Center